

Display and control panel



1. This is cooler set value screen.
2. This is super cooling indicator.
3. This is freezer set value screen.
4. This is super freeze indicator.
5. This is alarm symbol.
6. This is economy mode symbol.
7. This is holiday mode symbol.
8. This is child-lock symbol.

9. This enables the cooler value settings to be modified and super cool mode to be activated, if desired. The cooler maybe set to 8, 6, 5, 4, 2 °C super cool.

10. This enables the freezer setting values to be modified and super freeze mode to be activated, if desired. The freezer may be set to -16, -18, -20, -22, -24°C super freeze.

11. This enables the modes (economy, holiday...) to be activated, if desired.

Super Freeze Mode

How would it be used?

Press the freezer set button until the Super freeze symbol is seen on the screen. The buzzer will beep twice. The mode will be set.

In this mode:

- Cooler and super cool mode temperatures may be adjusted. In this case super freeze mode will continue.
- Economy and Holiday mode cannot be selected.
- Super freeze mode can be cancelled using the same selection operation.



Super Cool Mode

How would it be used?

Press the cooler set button until the Super cool symbol is seen on the screen. The buzzer will beep twice. The mode will be set.

In this mode:

- The freeze and Super freeze temperature mode may be adjusted. Super cool mode will continue in this case.
- Economy and Holiday mode cannot be selected.
- Super cool mode can be cancelled using the same selection operation.



Economy Mode

How would it be used?

- Push "mode button" until the eco symbol appears.
- If no button is pressed for 1 second. The mode will be set. The eco symbol will blink 3 times.

When the mode is set, the buzzer will beep twice.

- The freezer and refrigerator temperature segments will display "E".
- The economy symbol and E will light till mode finishes.

In this mode:

- The freezer may be adjusted. When economy mode is cancelled, the selected setting values will commence.
- Cooler may be adjusted. When economy mode is cancelled, the selected setting values will commence.
- Super cool and super freeze modes can be selected. Economy mode is automatically cancelled and the selected mode is activated.
- Holiday mode can be selected after cancelling the economy mode. Then the selected mode is activated.
- To cancel, you will just need to press the mode button.



Holiday Mode

How would it be used?

- Push the "mode button" until the holiday symbol appears
- If no button is pressed for 1 second. Mode will be set. The holiday symbol will blink 3 times. When the mode is set, the buzzer will beep twice.
- Cooler temperature segment will display "--".
- Holiday symbol and "--" will light till mode finishes.

In this mode:

- The freezer may be adjusted. When holiday mode is cancelled, the selected setting values will commence.
- Cooler may be adjusted. When holiday mode is cancelled, the selected setting values will commence.
- Super cool and super freeze modes can be selected. Holiday mode is automatically cancelled and the selected mode is activated.
- Economy mode can be selected after cancelling the holiday mode. Then the selected mode is activated.
- To cancel, you will just need to press the mode button.



Drink Cool Mode

When would it be used?

This mode is used to cool the drinks within an adjustable time.

How would it be used?

- Press the freezer button for 3 seconds.
- Special animation will begin on the set freezer value screen and 05 will blink on set cooler value screen.
- Press cooler button to adjust the time (05 - 10 - 15 - 20 - 25 - 30 minutes).
- When you select the time, the numbers will blink 3 times on screen and beep twice.
- If no button is pressed within 2 seconds, the time will be set.
- The countdown begins from the adjusted time minute by minute.
- The remaining time will blink on the screen.
- To cancel this mode press the freezer set button for 3 seconds.



Screen Saver Mode

Instructions for use

- This mode will be activated when you press the mode button for 5 seconds.
- If no button is pressed within 5 seconds when the mode is active, the lights of the control panel will go off.
- If you press any button when the control panel lights are off, the current settings will appear on the screen, and then you can make the adjustment as needed. If you do not cancel the screen saver mode or do not press any button within 5 seconds, the control panel will go off again.
- To cancel screen saver mode press the on mode button for 5 seconds again.
- When screen saver mode is active you can also activate the child lock.
- If no button is pressed within 5 seconds after child lock is activated, the lights of the control panel will switch off. You can see latest settings or modes status after you press any button. You can cancel child lock as described in the instruction of this mode while the control panel light is on .



Child lock function

When would it be used?

To prevent children from playing with the buttons and changing the settings you have made, child lock is available in this appliance.

Activating Child Lock

Press the Freezer and Cooler buttons simultaneously for 5 seconds.

Deactivating Child Lock

Press the Freezer and Cooler buttons simultaneously for 5 seconds.

Note: Child lock will also be deactivated if the electricity is interrupted or the fridge is unplugged

Light Cancelling Mode

When would it be used?

- If you want to cancel lights of cooler, you can select this mode.
- While pushing on freezer, cooler, mode buttons, open and close one of the doors for 3 times. The mode will be selected in this way. From now on, the lights will not come on when the function is not cancelled by the same way.
- If you want to cancel this mode, repeat the same process or the mode will automatically cancel itself after 24 hours.



Demo Mode

Entering Demo mode:

- Firstly the power is on, secondly within 1 minute user will push mode & freezer button at the same time, Then appliance will go on “demo function” and Demo Symbol will light during the mode.
- All functions can be adjusted to show how they are adjusted to the customer.
- During the demo mode to show the alarm symbol, at the 3th. pushing of the mode button SR alarm symbol and the “SR word” on the 7-segment will be active.

Canceling Demo mode:

For cancelling; Same operation will be used. If user will push mode & freezer button at the same time, demo function will be cancelled.

When appliance is Demo mode; if plug is removed or there is an electricity breakdown; demo mode will continue with current settings after user plug into or electricity breakdown finish.

Cooler Temperature Settings

- Initial temperature value for the Cooler Setting Indicator is +4 °C.
- Press the cooler button once.
- When you first push this button, the last value will appear on the cooler setting indicator.
- Whenever you press this button, a lower temperature will be set. (+8°C, +6°C, +5°C, +4°C, +2°C, Super cool)
- When you push the cooler set button until the Super cool symbol appears, and if you do not push any button within 1 second, Super Cool will flash.
- If you continue to press the button, it will restart from +8°C.
- The temperature value selected before Holiday Mode, Super Freeze Mode, Super Cool Mode or Economy Mode is activated and will remain the same when the mode is over or cancelled. The appliance continues to operate with this temperature value.



Freezer Temperature Settings



- The initial temperature value for the Freezer Setting Indicator is -18°C.
- Press the set freezer button once.
- When you first push this button, the last set value will blink on the screen.
- Whenever you press this button, a lower temperature will be set (-16°C, -18°C, -20°C, -22°C, -24°C Super freeze).
- When you push the set freezer button until the Super freeze symbol appears, and if you do not push any other button within 1 second, Super Freeze will flash.
- If you continue to press it, it will restart from -16°C.
- The temperature value selected before Holiday Mode, Super Freeze Mode, Super Cool Mode or Economy Mode is activated and will remain the same when the mode is over or cancelled. The appliance continues to operate with this temperature value..

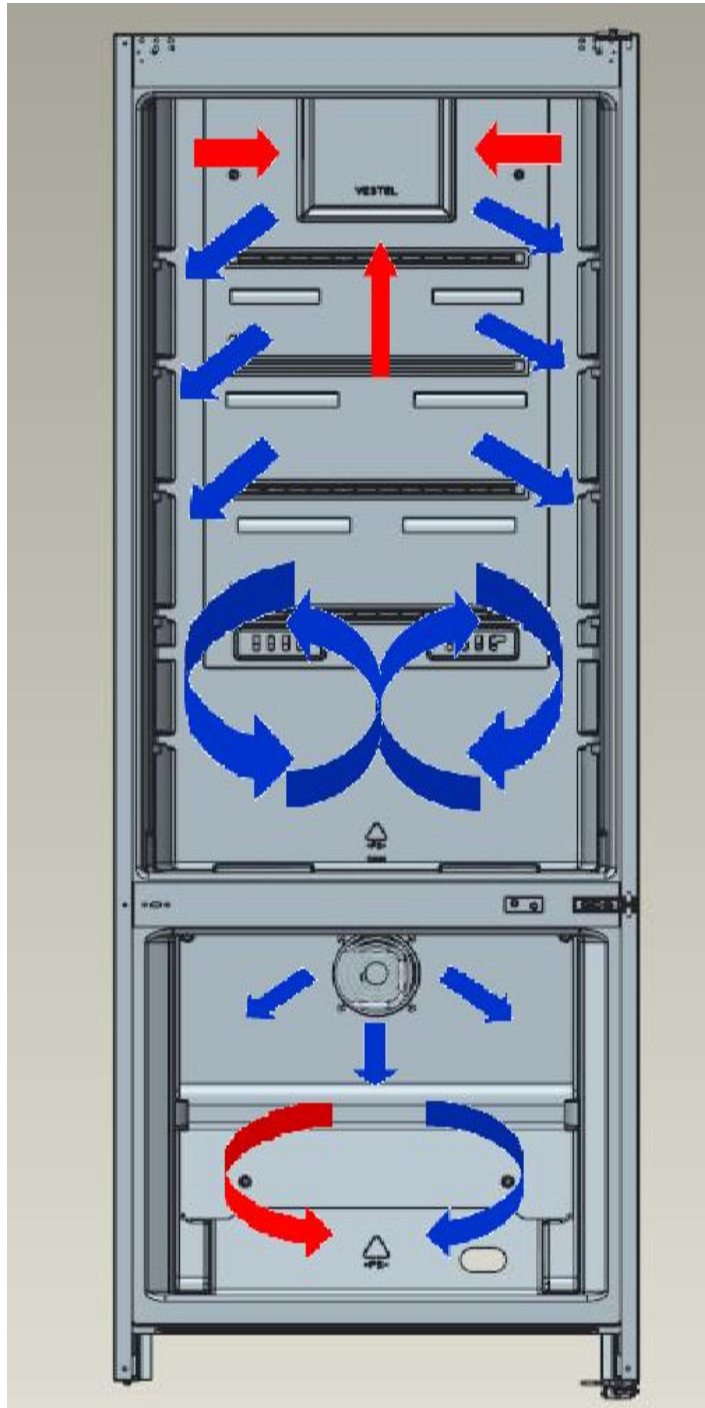
Warnings about Temperature Adjustments

- Your temperature adjustments will not be deleted when an energy breakdown occurs.
- It is not recommended that you operate your fridge in environments colder than 10°C in terms of its efficiency.
- Temperature adjustments should be made according to the frequency of door openings and the quantity of food kept inside the fridge.
- Do not pass to another adjustment before completing an adjustment.
- Your fridge should be operated up to 24 hours according to the ambient temperature without interruption after being plugged in to be completely cooled. Do not open doors of your fridge frequently and do not place much food inside it in this period.
- A 5 minute delaying function is applied to prevent damage to the compressor of your fridge, when you take the plug off and then plug it on again to operate it or when an energy breakdown occurs. Your fridge will start to operate normally after 5 minutes.
- Your fridge is designed to operate in the ambient temperature intervals stated in the standards, according to the climate class stated in the information label. We do not recommend operating your fridge out of stated temperatures value limits in terms of cooling effectiveness.

Climate Class	Ambient (°C)
T	16 to 43
ST	16 to 38
N	16 to 32
SN	10 to 32

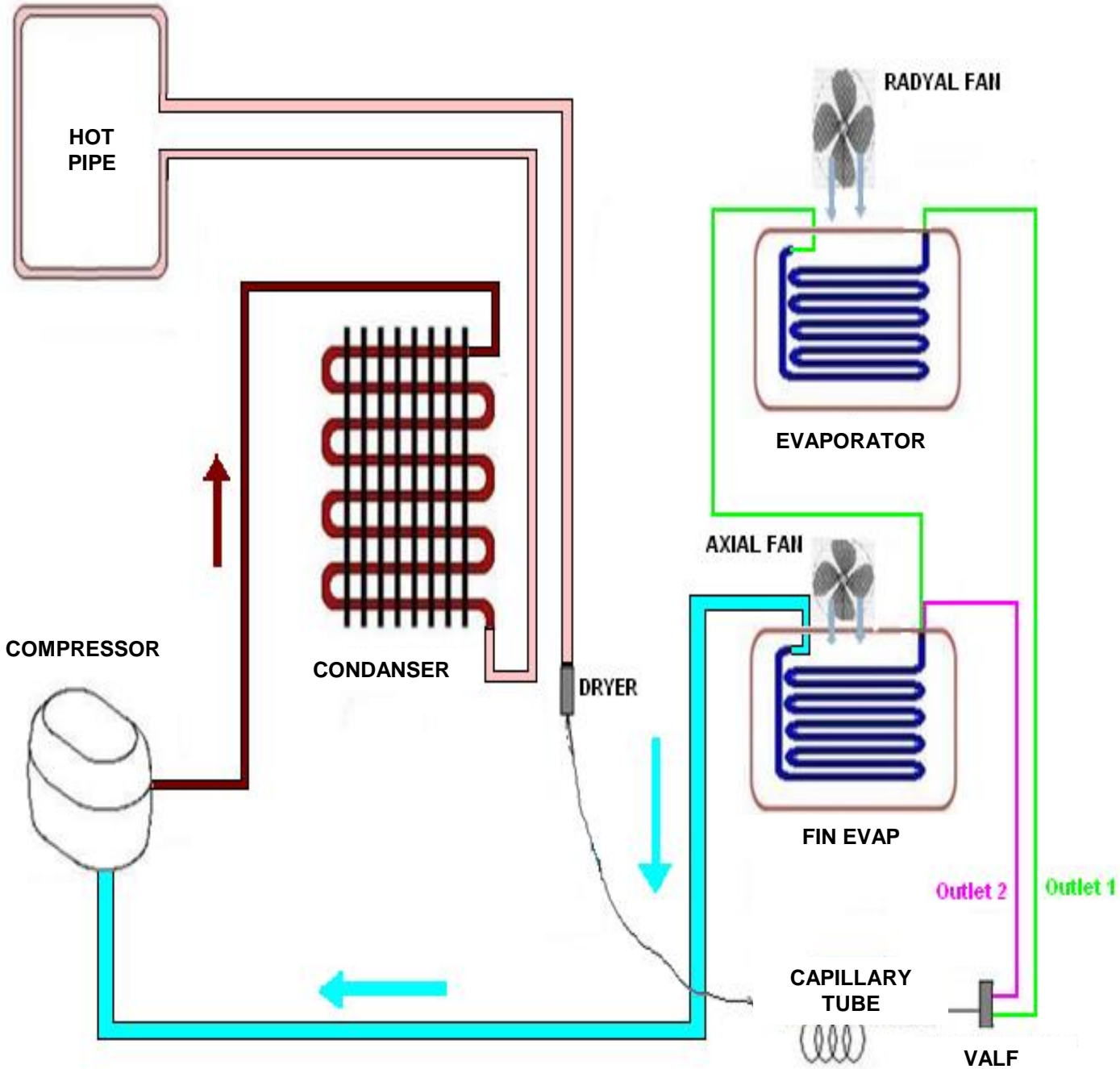
Note: If the temperature of the environment is higher than 38°C, the freezer partition temperature cannot be adjusted to -22°C and -24°C. It can only be adjusted to the values of -16°C, -18°C, -20°C.

Air Flow Diagram



 Cold Air
 Returning warm air

Refrigerant Cycle Diagram



VESTEL WHITE GOODS	NF COMBI – 5661 ELECTRONIC - IMD	CUSTOMER SUPPORT
	Special Programs	

When you first start the appliance

If the freezer and defrost sensors are warmer than -5°C , then the automatic test starts. The below listed components will be tested respectively with 5 second intervals.

- Radyal fan for 5 seconds
- Drain heater for 5 seconds
- Cooler desfrost heater for 5 seconds
- Defrost heaters for 5 seconds (Fin evaporator resistance, defrost pipe resistance and insulation mullion heater)
- Evaporator fan motor for 5 seconds
- Compressor for 5 seconds

After 5 seconds, the appliance will start to run.

Defrost algorithm

Defrosting activates after 55 hours of total running time of refrigerator or 18 hours of total compressor running time. Up to below mentioned reasons running times might decrease to 12 hours for refrigerator or 8 hours for compressor.

- Amount of ice formed,
- Number of times the door is opened and closed,
- Duration the door remained opened,
- Sudden usage change ,
- Sudden Cooler Compartment temperature increase,
- Sudden Freeze Compartment temperature increase,

Defrosting time

Under normal conditions, defrosting period ends when the defrost sensor measures 8°C . But if the defrosting period exceeds 37 minutes, then the defrosting mode completion temperature will be rised to 12°C .

Delay of the compressor run

Compressor will be started after 5 minutes of defrost mode.

Delay of fan motor run

Fan motor starts after 3 minutes of compressor run.

Low Voltage Program

In case of supply voltage lower than 170 V for more than 5 seconds, the low voltage program will stop the compressor, evaporator fan motor, condenser fan motor and also the super freezing super cooling functions. If this situation happens during the defrost mode, then the appliance will stop during defrosting.

When the supply voltage reaches a value greater than 180V, the appliance will start again from the defrost mode.

If the appliance was not stopped during the defrost mode, then will be stopped for minutes more for compressor secure start-up and will be started from the last setted program.



When the electricity is off

- All the parameters and functions will be kept in the memory (except the child lock function)
- When the electricity is on if the defrost sensor measures $<5^{\circ}\text{C}$ then the compressor will be started after 5 minutes. If the defrost sensor measures $>5^{\circ}\text{C}$, then the compressor will be started immediately.
- The appliance will be started with the last program setted.

SENSOR	SERVICE MODE REACTION
(1) Freezer sensor	Display FE 01
(2) Cooler sensor	Display FE 02
(3) Defrost sensor	Display FE 03
(4) Ambient sensor	Display FE 04
(5) RDS sensor	Display FE 05
Breakdown of (1) and (2)	Display FF 12
Breakdown of (1) and (3)	Display FF 13
Breakdown of (1) and (4)	Display FF 15
Breakdown of (1) and (5)	Display FF 14
Breakdown of (2) and (3)	Display FF 23
Breakdown of (2) and (4)	Display FF 24
Breakdown of (2) and (5)	Display FF 25
Breakdown of (3) and (5)	Display FF 35
Breakdown of (2) and (3) and (4)	Display FH 01
Breakdown of (1) and (3) and (4)	Display FH 02
Breakdown of (1) and (2) and (5)	Display FH 05
Breakdown of (1) and (3) and (5)	Display FH 06
Breakdown of (1) and (4) and (5)	Display FH 07
Breakdown of (2) and (3) and (5)	Display FH 08
Breakdown of (2) and (4) and (5)	Display FH 09
Breakdown of (3) and (4) and (5)	Display FH 10
Breakdown of (1) and (2) and (4)	Display FH 03
Breakdown of (1) and (2) and (3)	Display FH 04
Breakdown of (1) and (2) and (3) and (4)	Display FU 00
Breakdown of (2) and (3) and (4) and (5)	Display FU 01
Breakdown of (1) and (3) and (4) and (5)	Display FU 02
Breakdown of (1) and (2) and (4) and (5)	Display FU 03
Breakdown of (1) and (2) and (3) and (5)	Display FU 04
Breakdown of (1) and (2) and (3) and (4) and (5)	Display FU 05

VESTEL WHITE GOODS	NF COMBI – 5661 ELECTRONIC - IMD	CUSTOMER SUPPORT
	User and Service Mode Error Message	

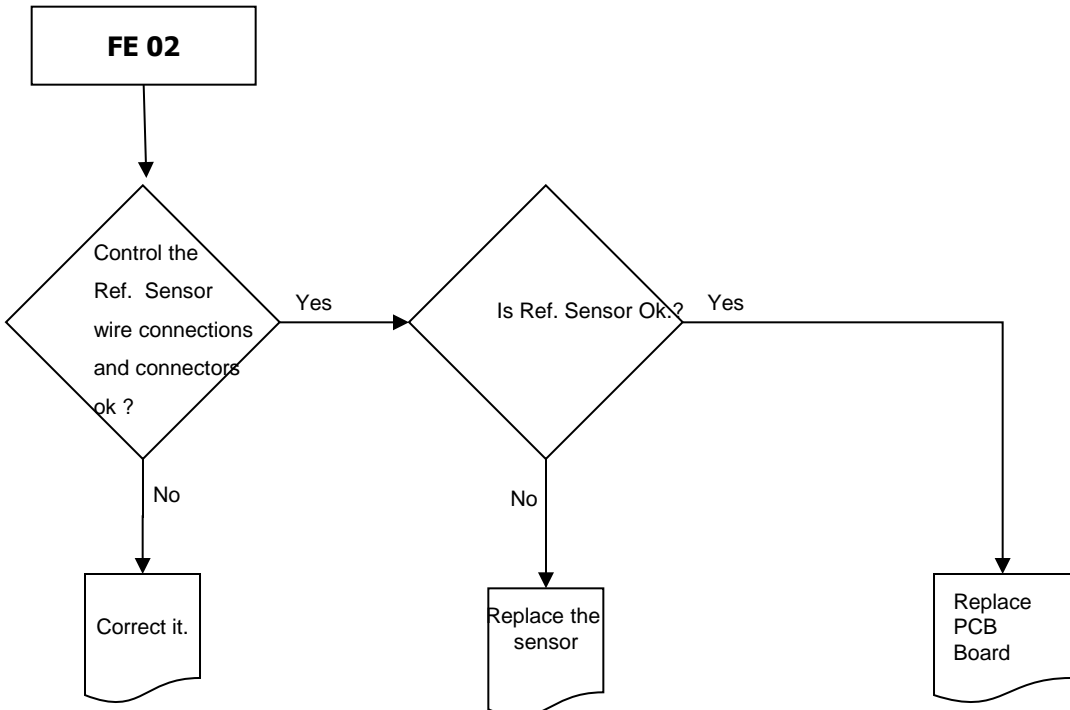
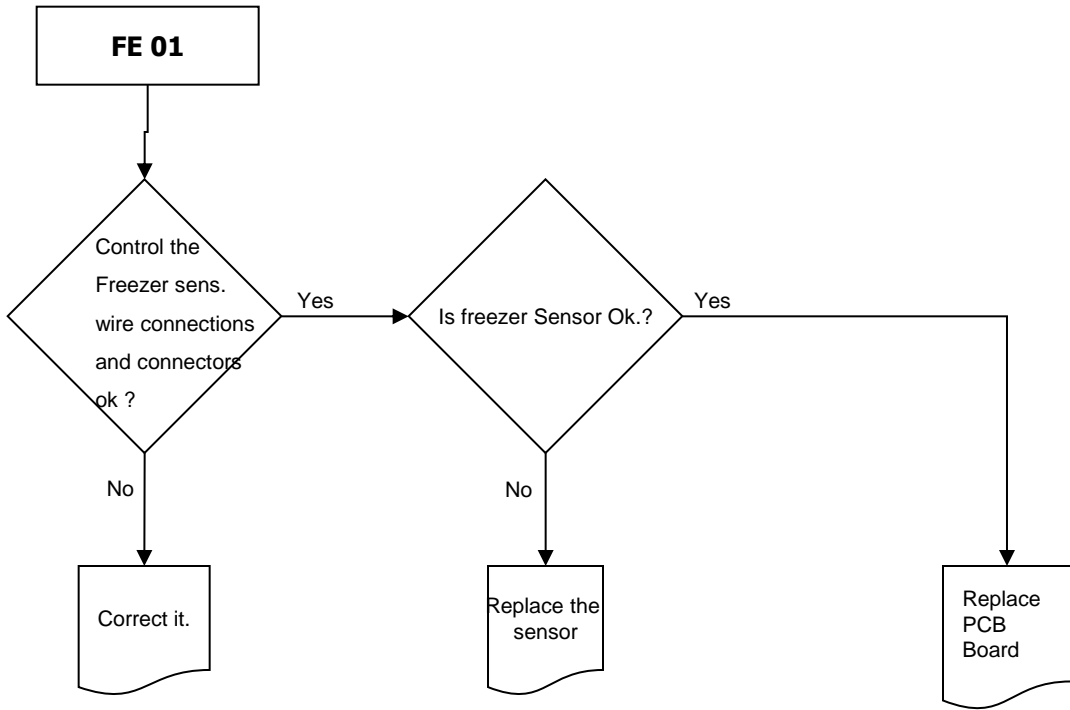
Component defect on display

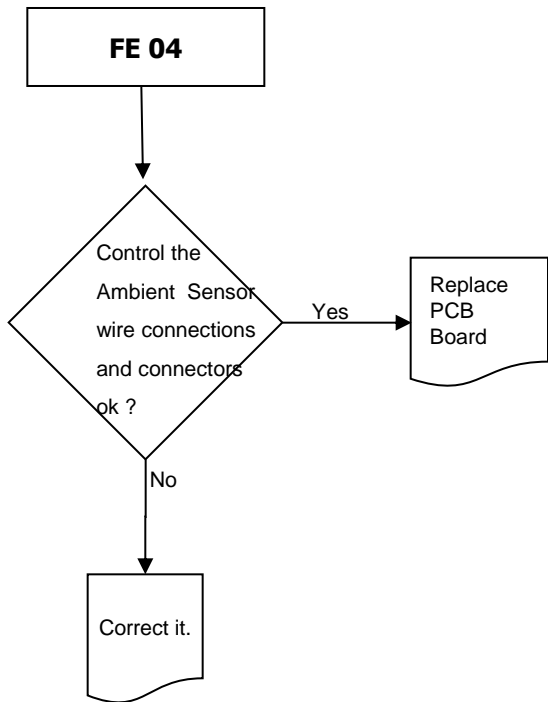
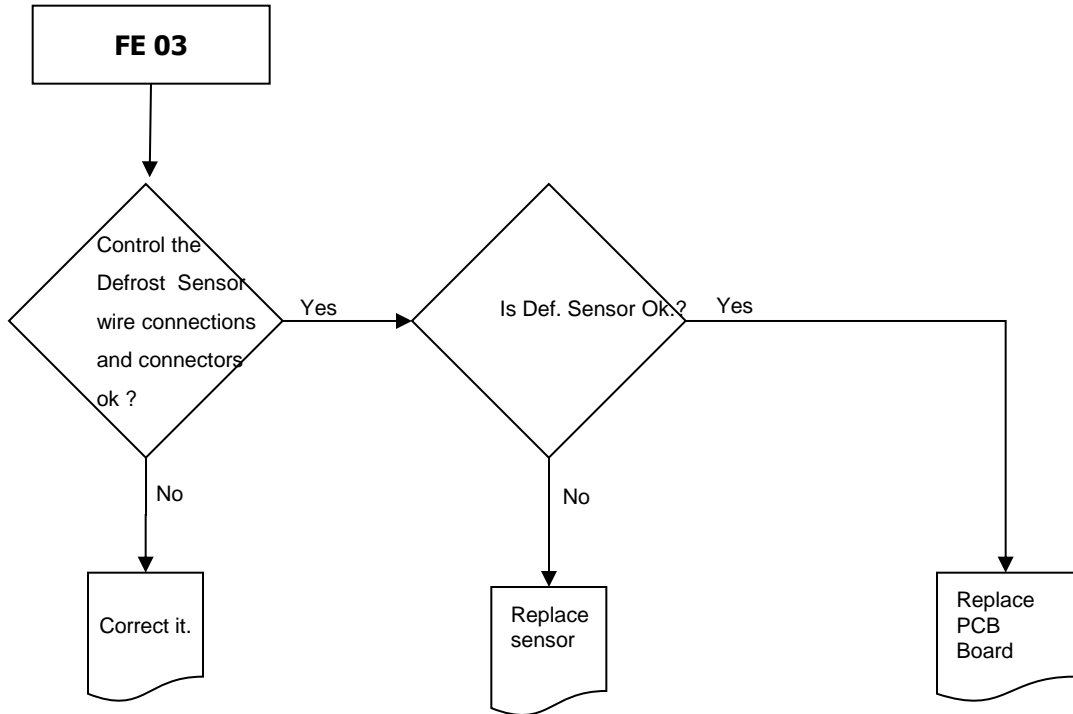
DEFECT TYPE	DETAILS	USER MODE REACTION	SERVICE MODE REACTION
Compressor Defect	Defrost sensor temp > -6°C	Display SR (blinks) in Freezer number segment & SR Symbol blinks	Display FO 05
Defrost Heater Defect	Defrost sensor < 0°C		Display FO 06

Low voltage error on display

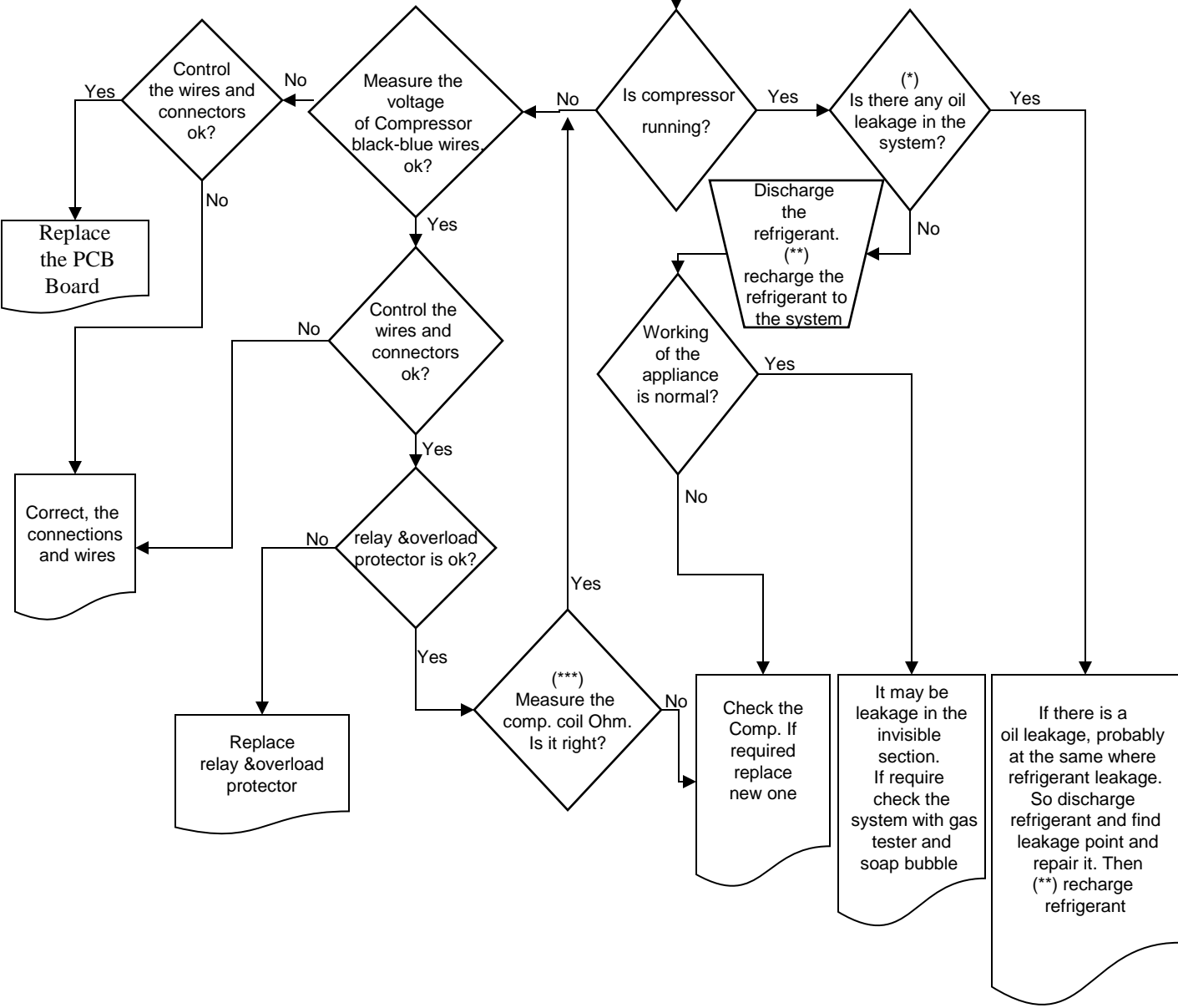
DEFECT TYPE	DETAILS	USER MODE REACTION	SERVICE MODE REACTION
Low voltage	Power supply < 170	Freezer and refrigerator number segment shows ' _ ' and ' ! ' & Buzzer 'beep'	Freezer and refrigerator number segment shows ' _ ' and ' ! '

DEFECT TYPE	DETAILS	USER MODE REACTION	SERVICE MODE REACTION
Freezer sensor > 0°C	Freezer compartment is not cool enough	Freezer LF number segment and alarm icon blink	Display CO 01
Ref. sensor > +30°C	Refrigerator compartment is warm	Refrigerator LC number segment and alarm icon blink	Display CO 02
Ref. sensor < -5°C	Refrigerator compartment is so cool	Refrigerator HC number segment and alarm icon blink	Display CO 03
F sensor > 0°C and R sensor > +30°C	Freezer and Refrigerator compartment both are not cool enough	Freezer LF and Refrigerator LC number segment and alarm icon blink	Display CO 04





FO 05
Insufficient cooling



(*) Check all of the visible pipes and welding points against oil leakage
 (**) Before recharging the refrigerant to the system; Dryer must be replaced and at least 30 minutes vacuum must be done
 (***) Comp. Main coil and auxiliary coil are 10 Ω and 22 Ω respectively (At 25 °C ambient temp.)

1. Unscrew the screw fixing the top hinge cover and remove it. (Fig-1)



Figure-1

2. Disconnect the display connector. Unscrew the two screws fixing the top hinge and remove it. (Fig-2)



Figure-2

3. Remove the refrigerator door. (Fig-3)



Figure-3

4. Unscrew the two screws which are fixing the middle hinge. (Fig-4)



Figure-4

5. Remove the freezer door. (Fig-5)



Figure-5

6. Unscrew the bottom hinge fixing screws and remove it. (Fig-6)

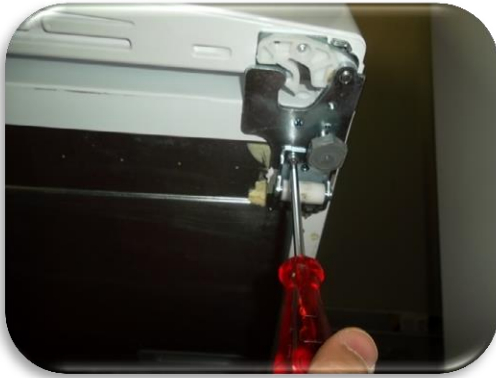


Figure-6

7. Unscrew the stationary foot of bottom hinge. Unscrew the hinge pin and screw .(Fig-7)



Figure-7

8. Unscrew the stationary foot and front wheel (Fig-8.1) and screw to the right side. (Fig-8.2)



Figure-8.1

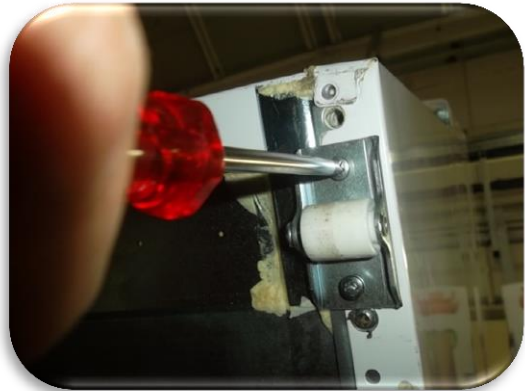


Figure-8.2

9. Unscrew the side panel support screw (Fig-9.1) and screw the bottom hinge to the left side . (Fig-9.2)



Figure-9.1



Figure-9.2

10. Remove the middle hinge cover on the left. (Fig-10.1) and insert the middle hinge cover to the right side. (Fig-10.2)



Figure-10.1



Figure-10.2

11. Replace the freezer door top bushing (Fig-11.1) and top bushing cap. (Fig-11.2)



12. Remove the freezer door bottom bushing and bottom stopper and then insert them the left side. (Fig-12)



Figure-12

13. Remove the freezer door right catcher (Fig-13.1) and assemble the left catcher to the left. (Fig-13.2) (You can find the left door catcher in the user manual bag)

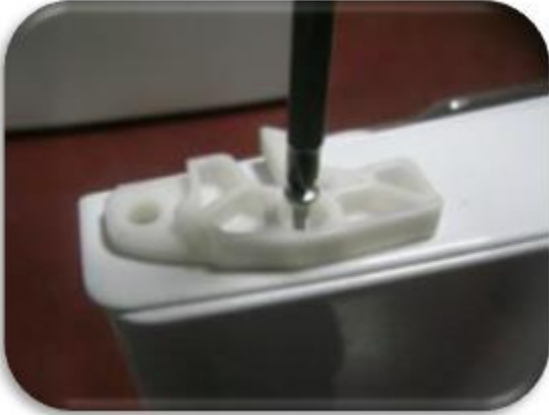


Figure-13.1



Figure-13.2

14. Remove the socket cover-left of the freezer door (Fig-14.1) and assemble the socket cover-right to the right. (Fig-14.2) (You can find the right socket cover in the user manual bag)



Figure-14.1



Figure-14.2

15. Assemble the freezer door. Turn the middle hinge by 180°. Fix the middle hinge by tightening the screws. (Fig-15.1) Assemble the refrigerator door. (Fig-15.2)



Figure-15.1



Figure-15.2

16. Remove the socket tape (Fig-16.1) and stick it on the right side. (Fig-16.2)



Figure-16.1



Figure-16.1

17- Screw the left top hinge. (Fig-17.1) and screw the hinge cover. (Fig-17.2)



Figure-17.1



Figure-17.1

CAUTION: The plug must be pulled out before the display is removed.

1. Display can be removed with the disassembly tool. Do not use any sharp objects to remove the display.
2. Disassembly tool code is **42152193** (Pic-1)



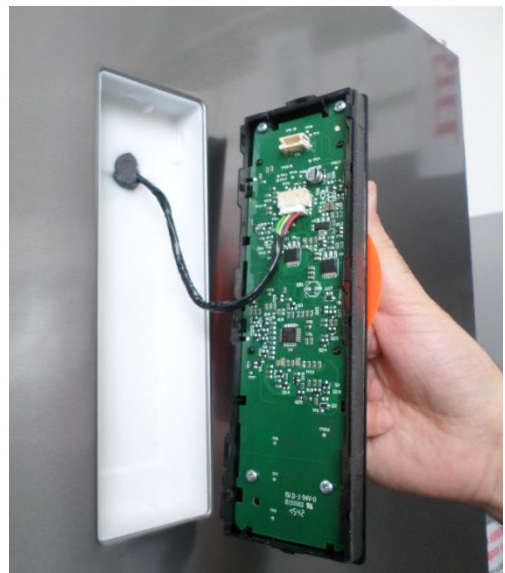
Picture-1

3. Place and fix the disassembly tool on to display and pull to take out the display. (Pic-2)

4. Take out the display cable socket. (Pic-3)



Picture-2



Picture-3

CAUTION: The plug must be pulled out before the mainboard group is removed.

1. Unscrew the screws which are fixing the main board cover. (Pic-1)



Picture-1

2. Pull the mainboard slightly forward and disconnect all the connectors and then replace it. Finally, place the mainboard cover and screw it. (Pic-2)



Picture-2

1- First remove the glass shelves (Pic-1)



Picture-1

2- Remove the chiller cover (Pic-2)

3- Remove the crisper glass shelf (Pic-3)



Picture-2



Picture-3

4- Remove refrigerator multi-flow caps and unscrew the screws. (Pic-4)

5- Remove refrigerator multi-flow (Pic-5)



Picture-4



Picture-5

VESTEL WHITE GOODS	NF COMBI – 5661 ELECTRONIC - IMD	CUSTOMER SUPPORT
	Replacement of Refrigerator Sensor	

Remove the freezer sensor cover by pulling forward (Pic-1) and disconnect sensor connector. (Pic-2)



Picture-1



Picture-2

1- Remove the ice cube trays. (Pic-1)



Picture-1

2- Unscrew the screws fixing the holders. (Pic-2)



Picture-2

3- Take out the holders by pulling downwards. (Pic-3)



Picture-3

1. Remove the freezer baskets. (Pic-1)



Picture-1

2. Remove the freezer shelf. (Pic-2)



Picture-2

3. Remove caps and unscrew the 4 screws shown at the picture. (Pic-3)



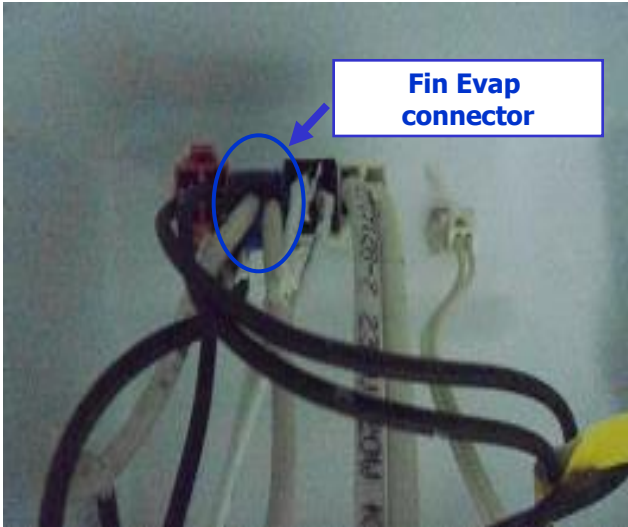
Picture-3

4. Remove the multiflow cover by pulling forward. (Pic-4)



Picture-4

1. Disconnect to evaporator connector.
(**blue** connector) (Pic-1)



Picture-1

2. Remove the evaporator by pulling forward in a horizontal direction. (Pic-2)

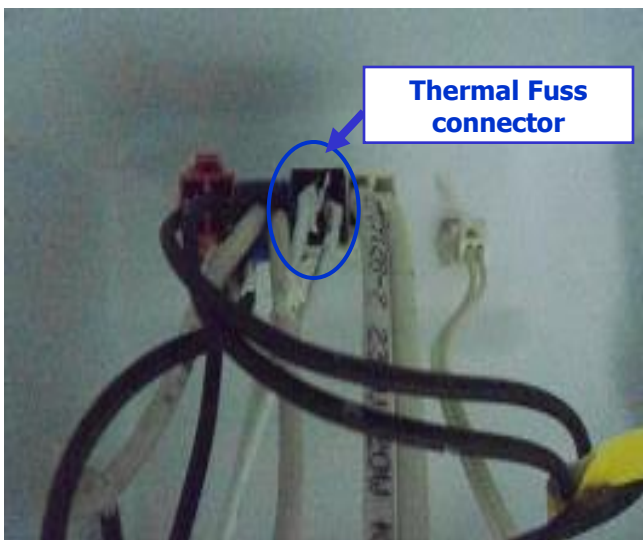


Picture-2

Do not push it up or down. You may broke the fixing plastics.

Replacement of Thermal Fuse Assy

1. Disconnect to thermal fuse connector.
(**black** connector) (Pic-1)



Picture-1

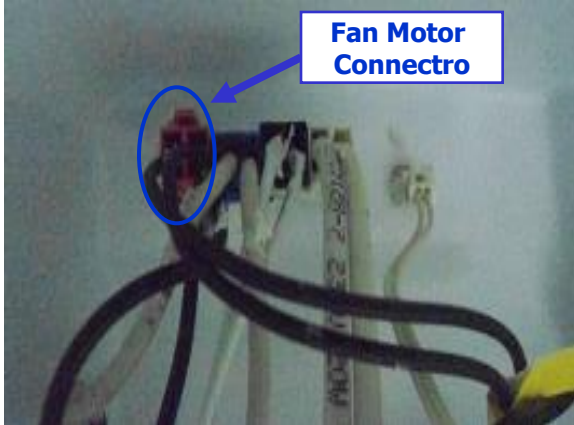
2. Remove the thermal fuse by pulling which mounted on the left side of the evaporator. Take out the thermal fuse. (Pic-2)



Picture-2

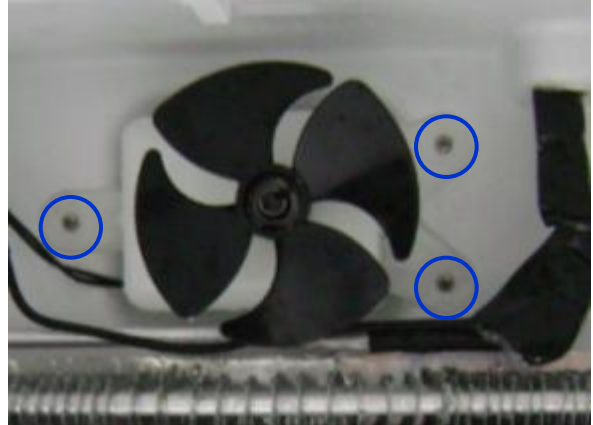
Warning: Make sure the unit is unplugged.

1. Disconnect the fan motor connector.
(pink connector) (Pic-1)



Picture-1

2. Unscrew the screws which are fixing the fan motor box and remove the fan motor box . (Pic-2)



Picture-2

3. Remove the propeller by pulling forward.
(Pic-3)



Picture-3

4. Release the tabs by using a screwdriver. (Pic-4)



Picture-4

